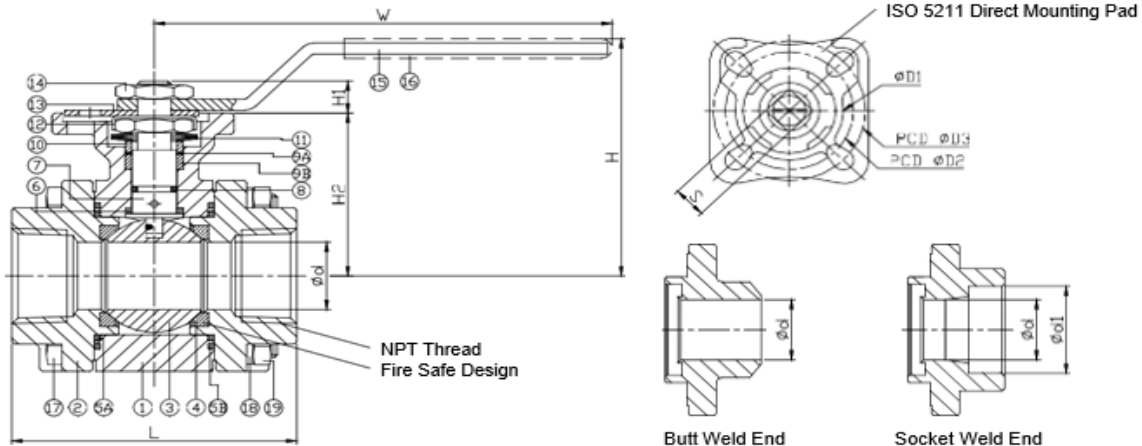


# OSB4423

- Carbon Steel 3-piece Body
- Investment casting
- Encapsulated body bolts
- 1/2"-1" 2000WOG, 1-1/4"-2" 1500WOG, 2-1/2"-4" 1000WOG
- Temperature -4°F - +392°F
- Blow-out proof stem
- Live loaded packing
- Anti-static device
- API 607 Fire Safe Design
- ISO-5211 Direct Mount



ITEM	PARTS	MATERIAL	
1	BODY	ASTM A351-CF8M	ASTM A216-WCB
2	CAP		
3	BALL	ASTM A351-CF8M	
4	STEM	ASTM A276-316	
5	SEAT	RTFE	
6	SEAL		
7	THRUST WASHER	PTFE	
8	PACKING		
9	O-RING	VITON	
10	BELLEVILLE WASHER	AISI 301	
11	HANDLE	STAINLESS STEEL	
12	STEM NUT		
13	LOCKING PAD		
14	GLAND RING		
15	LOCKING WASHER	AISI 304	
16	BOLT		
17	NUT		
18	SPRING WASHER		
19	HANDLE SLEEVE	PVC	



OC07956.2C

NPS	d	d1	L	H	H1	H2	W	S	D1	D2	D3	Torque (in-lb)
1/2"	0.59	0.87	2.95	2.52	0.33	1.89	4.51	0.35	1.22	1.42	1.65	31.9
3/4"	0.79	1.08	3.15	2.64	0.35	1.81	4.51	0.35	1.22	1.42	1.65	45.1
1"	0.94	1.36	3.66	3.19	0.43	2.28	5.51	0.43	1.4	1.65	1.97	88.2
NPS	d	d1	L	H	H1	H2	W	S	D1	D2	D3	Torque (in-lb)
1-1/4"	1.18	1.69	4.33	3.37	0.43	2.47	7.48	0.43	1.4	1.65	1.97	115.9
1-1/2"	1.5	1.93	4.72	4.15	0.55	2.93	9.25	0.55	2.2	1.97	2.76	139
2"	1.97	2.41	5.51	4.43	0.55	3.23	9.25	0.55	2.2	1.97	2.76	216
NPS	d	d1	L	H	H1	H2	W	S	D1	D2	D3	Torque (in-lb)
2-1/2"	2.56	2.91	7.25	5.78	0.67	3.8	13.39	0.67	2.99	2.76	4.02	393.9
3"	2.95	3.54	8.03	6.26	0.67	4.28	13.39	0.67	2.99	2.76	4.02	772.7
4"	3.78	4.55	9.45	-	-	-	13.39	0.87	3.94	4.02	4.92	798.3

**OS&B® Industrial**

13-495 Woodward Ave., Hamilton, Ontario, Canada L8H 6N6  
 T. 1.905.661.0976 F. 1.905.667.1842

All rights reserved. OS&B® Industrial reserves the right to change product specifications and material or discontinue models without notice.

